

# Aria.

13.

*Andante cantabile.*

Bassoon

Piano



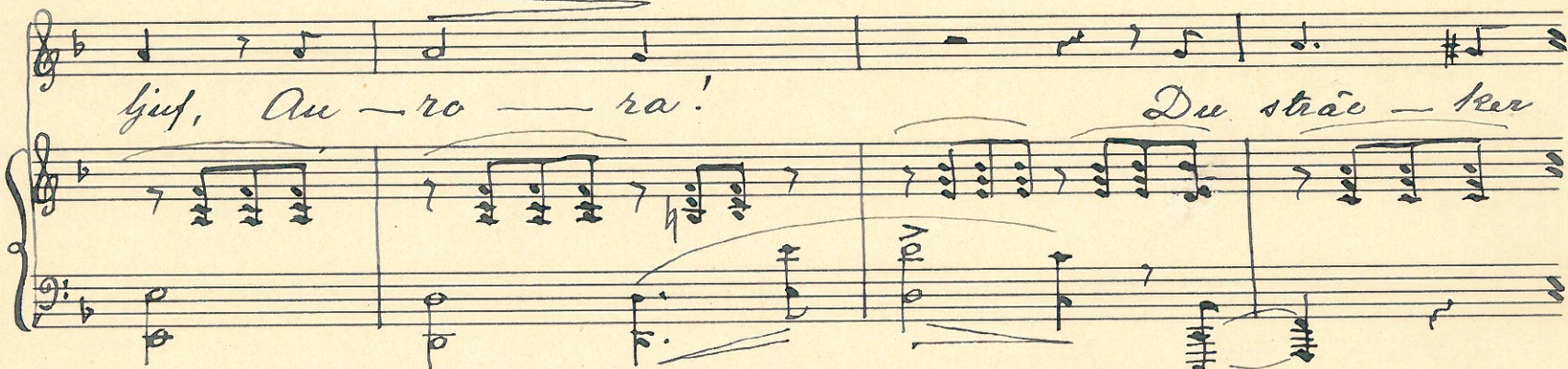
En ha - stigt flyktan - de mi - nut, Men ack hur

*sehn - à tempo*



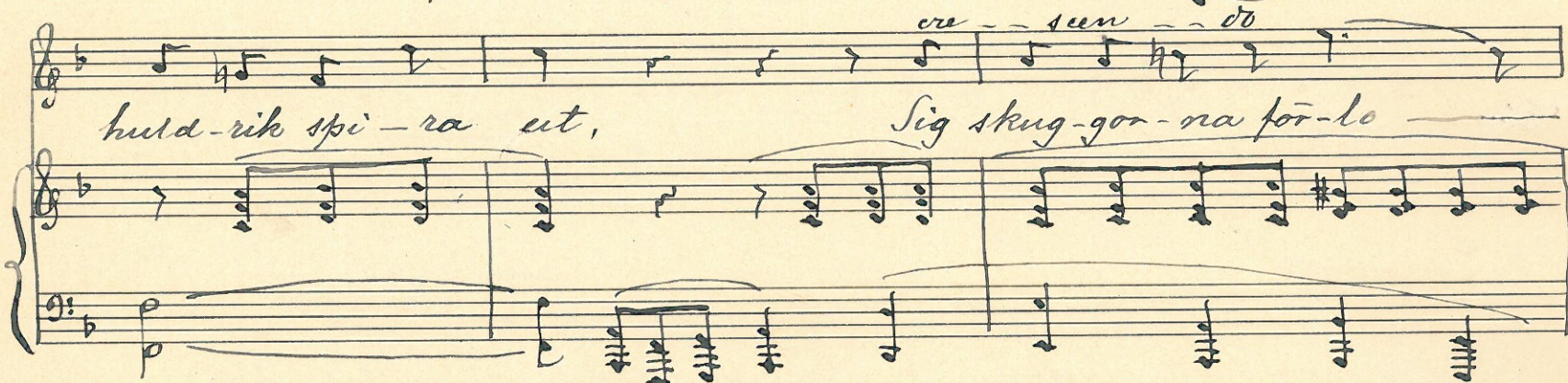
lyf, Au - ro - ra!

Du strå - ker



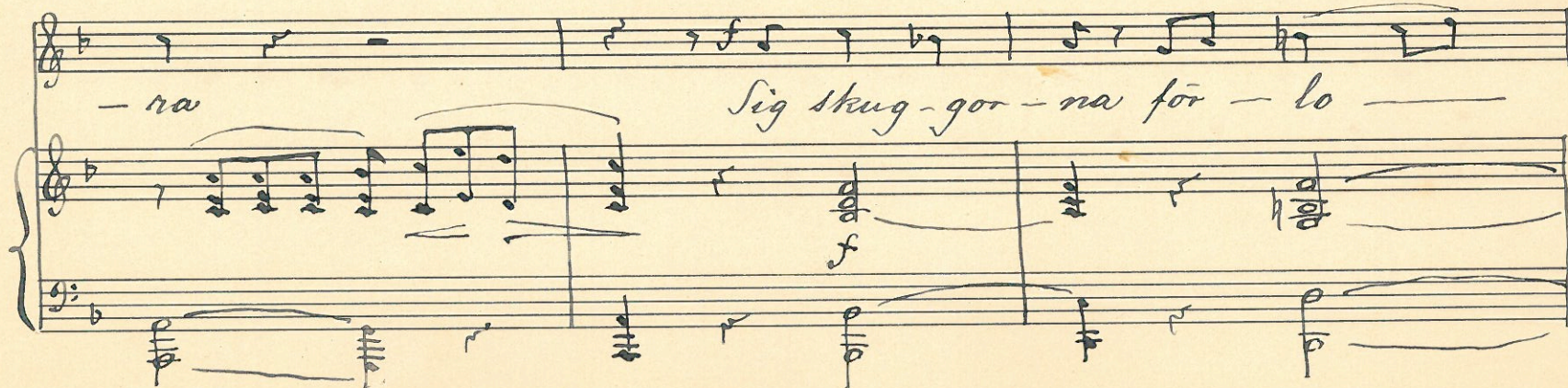
cre - sen - do

huld - rik spi - ra ut, Sig skug - gor - na för - lo



- ra

Sig skug - gor - na för - lo





- ra.

När da-gens lju-sa drott Sjelf nal-kas, du din

lott ser u-tan smär-ta by-tas. För-svir-ner du väl då? O

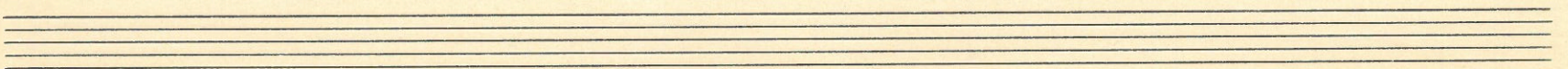
rallent. f à tempo

mf

nej, o nej! I da-gens ar-mar slu-ten,

Din blir en säll-het, hvil-ken ej Af jör-dens barn är

marcato





*f espressivo*

nju - ten.      Din blir en säll-het hvil - ken ej      Af

*f espressivo.*

jor-dens barn är nju - ten. Du tro-get fylt ditt kall Och

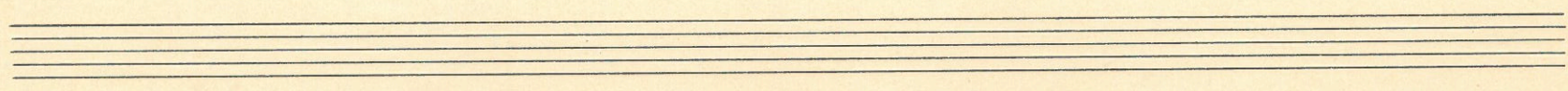
till be-lö-ning skall vid Giv-sets ur-sprung vi - gas.

När da-gens Giv - sa drott      Sjelf      nal - kas

*più mosso*

For - svin-ovr du väl då      Au - ro - ra?

*più mosso. cresc.*





*mf*  
nej! Du tro-get fylt ditt kall. Och

Detailed description: This system contains the first two staves of music. The top staff is a vocal line in G major, starting with a fermata on a whole note G4. The lyrics 'nej!' and 'Och' are written above the staff. The piano accompaniment consists of two staves with chords and moving lines in the right and left hands.

*resc.* *Lento* *rallent.*  
till be-lö-ning skall Vid Jhu-sets ur-sprung vi

*mf* *resc.* *Lento* *rallent.*

Detailed description: This system contains the next two staves. The vocal line continues with the lyrics 'till be-lö-ning skall Vid Jhu-sets ur-sprung vi'. There are tempo markings 'Lento' and 'rallent.' above the staff. The piano accompaniment includes a change in time signature from 2/4 to 3/4 and back to 2/4.

*- gas.*  
*à tempo*

Detailed description: This system contains the piano accompaniment for the third system. It features a melodic line in the right hand and a supporting bass line in the left hand, with various ornaments and dynamics.

*Slut-Kör.*

Detailed description: This section consists of five empty musical staves, serving as a placeholder for the 'Slut-Kör' (Final Chorus) part of the score.

*Allegro.*  
*Piano*

Detailed description: This system contains the piano accompaniment for the 'Allegro' section. It starts with a 'Piano' dynamic marking and features a lively, rhythmic melody in the right hand and a steady bass line in the left hand.



Handwritten musical score for piano accompaniment, first system. It consists of two staves (treble and bass clef). The music includes various rhythmic patterns, accidentals, and dynamics such as *f* (forte) and *p* (piano).

Vocal staves for Soprano, Alto, Tenor, and Bass. The lyrics are: "En mor-gon-välet". Performance directions include *risoluto* and *a tempo*. The Soprano part includes the word "Så".

Handwritten musical score for piano accompaniment, second system. It continues the musical notation from the first system, including dynamics like *p*.

Handwritten musical score for piano accompaniment, third system. It continues the musical notation, including dynamics like *f*.

Vocal staves for Soprano, Alto, Tenor, and Bass. The lyrics are: "Så är den dröim den usig - doms".

Handwritten musical score for piano accompaniment, fourth system. It continues the musical notation, including dynamics like *f*.

Vocal staves for Soprano, Alto, Tenor, and Bass. The lyrics are: "Så är den kor-ta ung - doms".



- dröm, Hvars glöd man här ryckt skä — dar. En

mor-gon-väkt På ti-dens ström, Som hö-gre kfar-het bä — dar.

*Sopran solo* *Andante con espressione*  
 Så är den kor — ta ung — doms —

*Andante*



- dröm Svans glöd man här - rycket

skä dar:

*Flör*

*Andante*  
 Dröm, dröm den så så att sist du må  
 Dröm, dröm den så Att sist att sist du

*p. Andante*

*sempre*  
 Vid so-lens upp-gång vake — na!  
*sempre*  
 må Vid



Tempo I

Dröm, o dröm den så. Att

O, dröm den så

sist du må ere - san tid so

Att sist du må ere - san

lens upp - gång vak - na!

rallent.